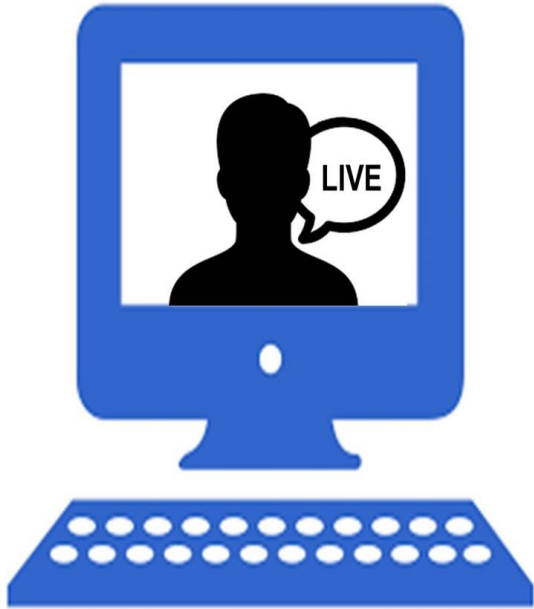


# VIRTUAL OSHA #7215 - Silica in



**Start Date: 9/8/2020 7:30 AM**

**End Date: 9/8/2020 4:00 PM**



[Click here for additional date options](#)

---

## NOTE:

This course will be a Live Online Virtual Classroom training course. It will be alive, interactive, virtual classroom delivered right to your computer via the Internet. The instructor will teach live and you will be required to actively participate. You must have web camera and audio capabilities, and your camera must be turned on the entire class time. Access via a smartphone is not allowed.

---

## OSHA #7215 Silica in Construction and General Industry/Maritime

This course provides students with the basic skills necessary to work safely with RCS in the workplace. Student learn the key requirements of the OSHA Respirable Crystalline Silica standard final rule for construction, provides participants with information about RCS health hazards, employee exposure, exposure assessment options including the OSHA Respirable Crystalline Silica Standard, CFR 1926.1153 and 1910.1053, Table 1, and exposure control measures.

Upon course completion students will have the ability to

- Recognize respirable crystalline silica exposure
- Describe respirable crystalline silica exposure assessment options
- Recognize respirable crystalline silica exposure control measures

**Target Audience:** Employers, managers, employees or employee representatives and workers who handle RCS material in the workplace