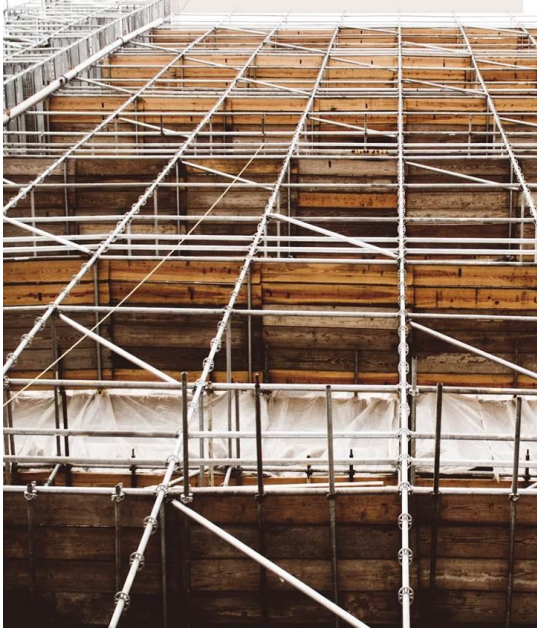


OSHA #3085



OSHA #3085 Principles of Scaffolding

Start Date: 5/14/2019 7:30 AM

End Date: 5/16/2019 4:00 PM

[Click here for additional date options](#)

The OSHA #3085 course covers the requirements for safe construction and use of scaffolding using OSHA's construction scaffold standards as a guide. Course topics include hazards associated with scaffold design, assembly, disassembly and use, types of scaffolds, determining scaffold capacity, employee qualifications and training and maintenance, repair and inspection requirements. Students will participate in activities that reinforce concepts of safe scaffolding.

By the end of this course, participants will be able to:

- Identify types of scaffolds and their components
- Determine safe assembly, use, and disassembly
- Recognize common OSHA standards violations

Target Audience: Any worker acting as the Competent Person on the jobsite, those performing safety and health evaluations or training, site supervisors, owners, those responsible for assembling, disassembling, and working on or near scaffolding.

Language: English

Prerequisites: None

Minimum Class Size: 3

Maximum Class Size: 40

Course Length: 3 days

Format : Lecture, Discussion, Audio/Visual; group activities

Exam(s): none

Documentation : OSHA Certificate