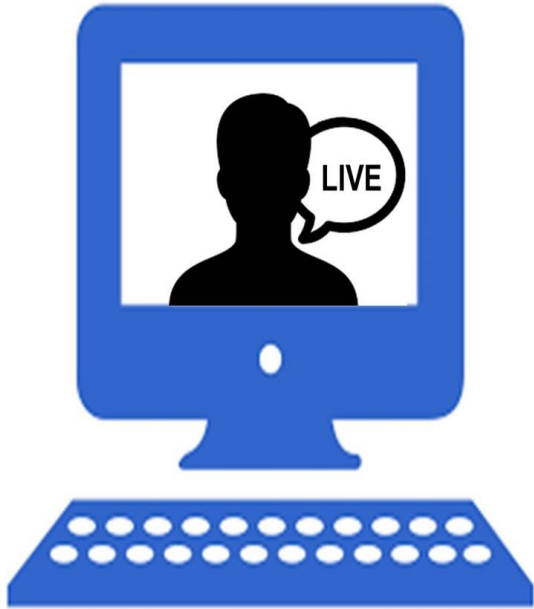
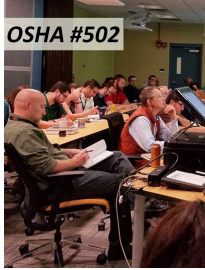


# OSHA #502 - VIRTUAL -Update for



**Start Date: 2/8/2021 7:30 AM**

**End Date: 2/10/2021 4:00 PM**



[Click here for additional date options](#)

## NOTES:

1) This course will be a Live Online Virtual Classroom training course. It will be a live, interactive, virtual classroom delivered right to your computer via the Internet. The instructor will teach live and you will be required to actively participate. There are technical requirements, including the use of a webcam or other camera capabilities. Technical requirement will provided prior to the course date.

2) You must attend all days to receive class credit.

Session dates for class starting 4/5/21:

4/5/21

4/6/21

4/7/21

4/8/21

OSHA #502 is an OSHA Outreach Trainer refresher course designed to ensure trainers of the Outreach Training Program demonstrate continued professional development in their field, and are able to identify, define and explain construction industry hazards and acceptable corrective measures as they continue to teach 10- and 30-hour OSHA Outreach courses in accordance with the 29 CFR 1926 OSHA Construction Safety and Health Administration. For additional information on the OSHA Outreach Training Program, visit the OSHA Outreach Training Program website at <https://www.osha-slc.gov/outreach>.