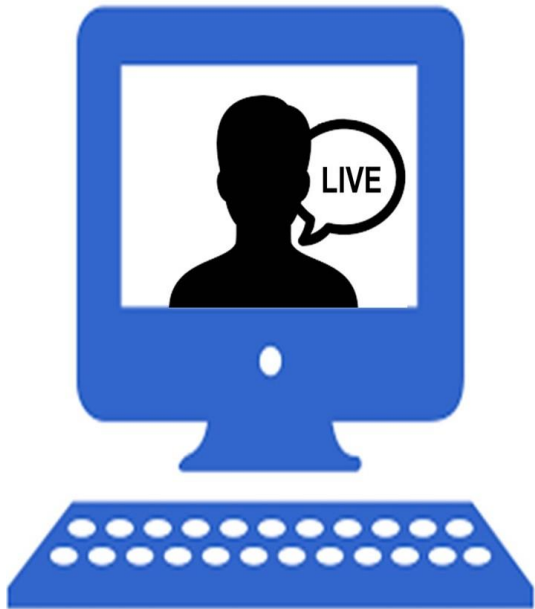


OSHA #7300 - VIRTUAL

Start Date: 8/26/2022 7:30 AM

End Date: 8/26/2022 4:00 PM



[Click here for additional date options](#)

OSHA #7300 - Understanding OSHA's Permit-Required Confined Space Standard

This one-day course discusses the requirements of OSHA's permit-required confined space standard, 29 CFR 1910.146. It is designed for small business employers or a designated representative (line supervisor or manager) with the responsibility to develop a permit space program. It covers OSHA's requirements but does not feature hand-on sections (instrumentation and control methods and testing) which are included in OSHA #2264 .

By the end of this course, participants will be able to:

- Explain safety and health hazards associated with confined space entry
- List steps to evaluate, prevent and abate the hazards associated with confined space work

Target Audience: Small business employers or a designated representative (line supervisor or manager) with the responsibility to develop a permit space program.

Language: English

Prerequisites: None

Minimum Class Size: 3

Maximum Class Size: 40